



## Europe Engage: Service-learning as part of civic engagement

In the face of suffering, one can...



... act!

# The Bologna Declaration

*“A **Europe of knowledge** is now widely recognised as an irreplaceable factor for **social and human growth** and as an indispensable component to **consolidate and enrich the European citizenship**,... The **importance of education** and educational co-operation in the development and strengthening of stable, peaceful and democratic societies is universally acknowledged as paramount...”*



# The mission of the University

*"It is an entity of Public Law that, within its competencies, aims the public of higher education through research, teaching and study, as well as **THE TRANSFER OF KNOWLEDGE TO SOCIETY.***

*(...) It is defined by its will **OF INNOVATION AND SOCIAL INVOLVEMENT,** in coordination and collaboration with other universities and institutions"*

Autonomous University of Madrid



Cincuenta  
Aniversario

UAM Universidad Autónoma  
de Madrid



# The problems our world is facing...



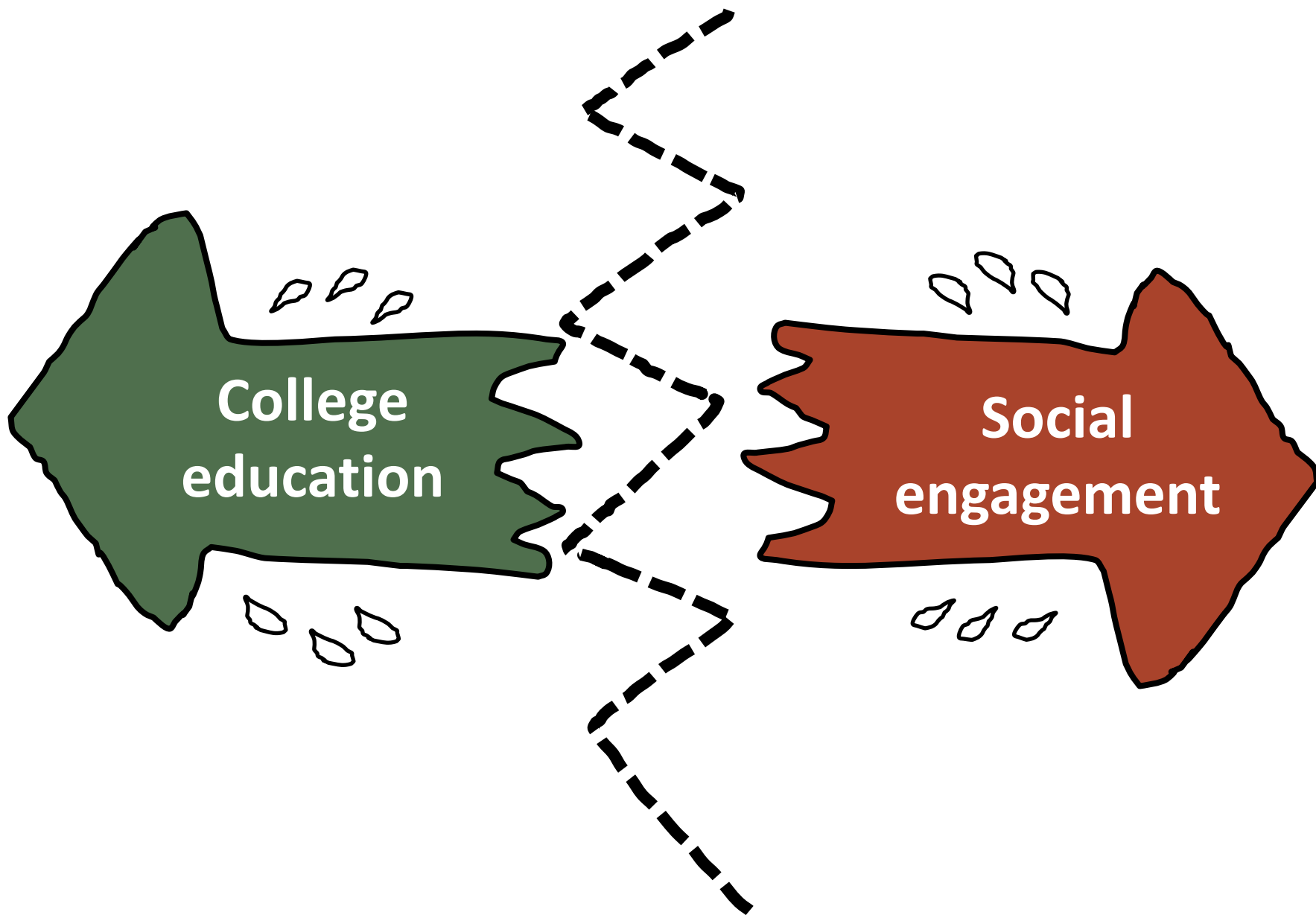
... are not just academic or research issues...  
but mostly civic engagement issues!!!

# Our ivory tower

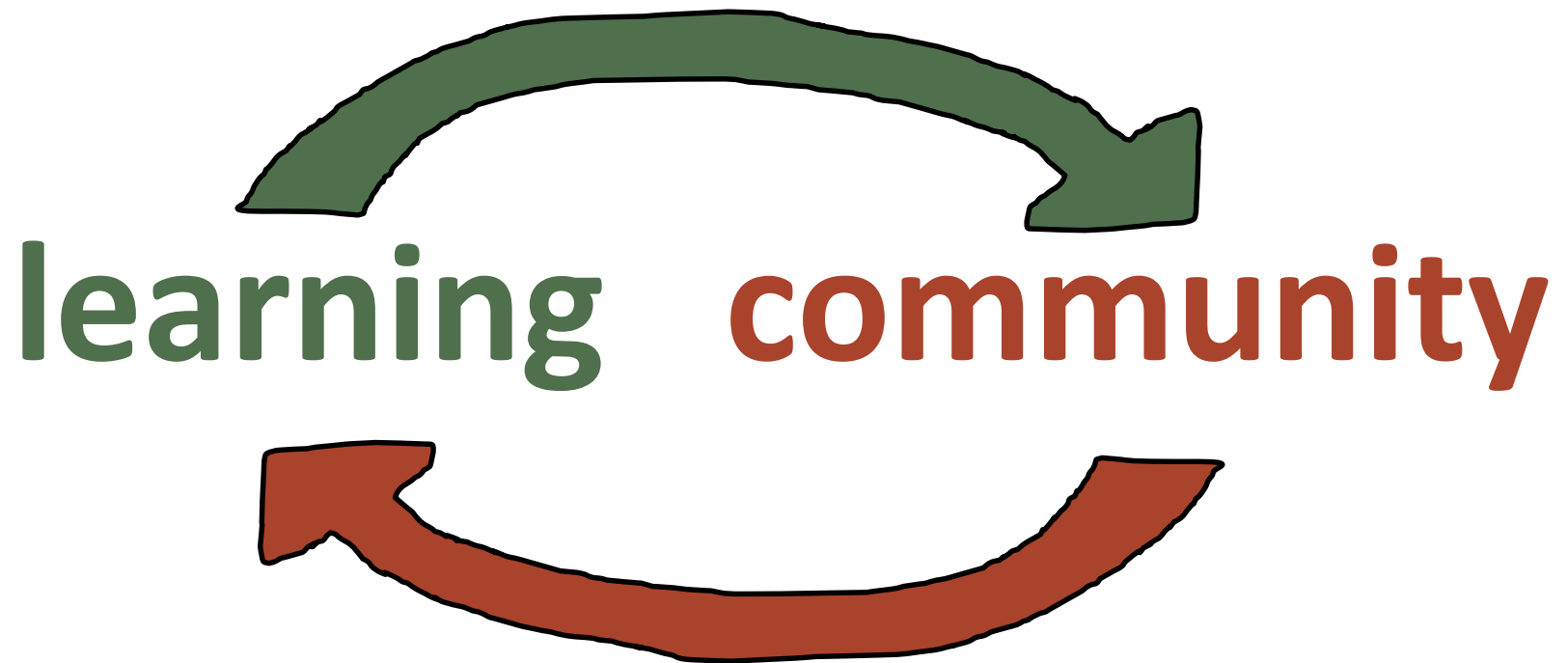


We study nature.  
YOU go save it!









# What is Service-Learning?



# Much more than a methodology

A way of understanding...



If students at a Chemistry class collect trash in a disadvantaged neighborhood, they are providing a

**service to the community**





If they collect water and waste, analyze it in the laboratory and draw conclusions about pollution, they are doing a

## Practical activity



When the students

- Pick up garbage,
- Analyze what they collected
- Share the results with the neighbors
- Offer suggestions about how to recycle and reduce the bill.
- Reflect on their experience

**service-learning**





# Something simple...



Learn by giving a service to  
the community

...and powerful



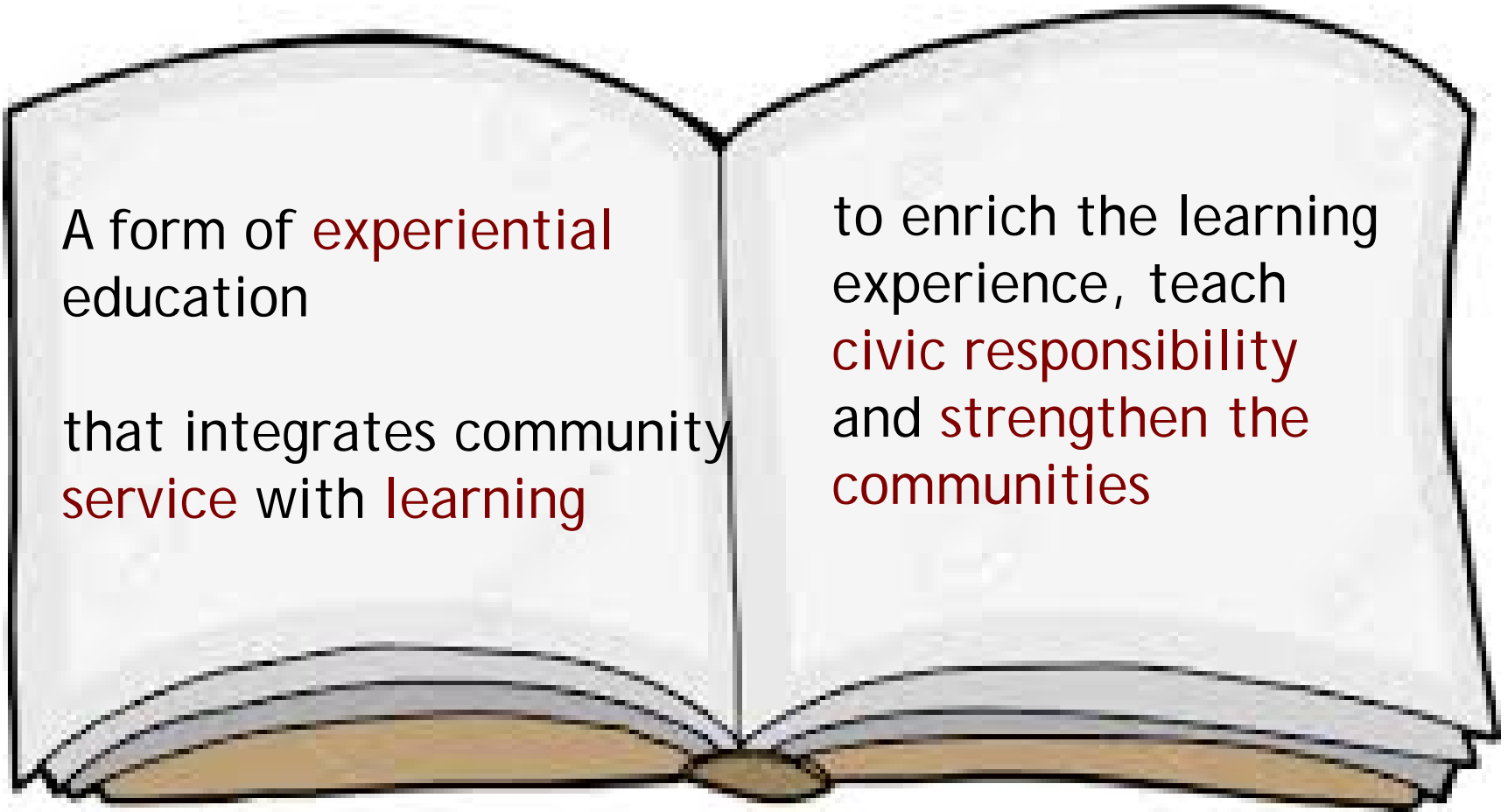
competent citizens capable of  
transforming society

# Service-learning is...

A form of **experiential** education

that integrates community **service** with **learning**

to enrich the learning experience, teach **civic responsibility** and **strengthen the communities**



**An educational practice is Service-Learning when it meets 4...**

## **Basic requirements**

**Reflection**

**Participation**

**Learning**

**Service**

# Quality Standards of S-L

Reciprocity

Meet actual real needs

Learning in real world settings

Direct contact

Ensure support & coaching  
for students

Include evaluation &  
documentation

Offer adequate time frames

Sustainability

Values transdisciplinarity

# Service-Learning is not...

- A volunteer program
- A practical learning activity
- A single-sided coin: There is a mutual benefit
- Only academic
- Only for the young





# Some S-L experiences



# París-365 Community Kitchen



## The service

Students of Agricultural engineering produce vegetables for meeting the needs of a community kitchen, and they provide bags with food to people in need.



## The learning

Technical knowledge of the subject "Horticultural farming," development of abilities for programming farming, knowledge of the surroundings, collaborative work, communication abilities

# Lights and... Action!

## The service

Students of Mining Engineering support students from an Initial Profesional Qualification Program who provide advice on electrical supply in old apartment buildings for improving their energy efficiency and preventing electrical risks.



## The learning

Applying knowledge and abilities on electrical supply, communication skills with clients, planning, organization and collaborative work skills, responsibility.





# Fiare Project

## The service

Students from the School of Economics become familiarize with Ethical Banking and organize campaigns and actions for its dissemination among youth sectors that do not know it.

## The learning

Knowledge about banking entities and social entities, and their values, critical thinking towards the traditional banking system, group work, a world view from an ethical and social perspective.



# From a factory of weapons to a factory for culture



## The service

Students and associations from a village recover an old weapons factory and make it into a cultural center that is ran by an association.



## The learning

Knowledge about analysis of needs and entities in the territory, collaborative skills, knowledge of research methodology, etc.

# Water for human consumption

## The service

Chemical Engineering students design a system for reducing lead and sulfate concentrations in drinking water of a municipality and advise the council.



## The learning

Introduction to research, communication skills, technical-economical balance, management difficulties.





# Connect

## The service

Students teach computing to adults, who are away from the technological world, helping them to overcome the "digital divide"



## The learning

Computer skills; discovery of the "digital divide"; communication and relationship skills with the elderly; teaching strategies ...



# Training for employment



## The service

Student teachers support, as mediators, young people with intellectual disabilities participating in a job placement program who contribute to recycling and destruction of paper.



## The learning

Labor skills in the administrative sector, independent living skills, knowledge of the environment, citizen participation, social and communication skills.

# Adams Project

## The service

Medical and Nursing students act as clowns in oncological units to compensate the impact that it has on children with cancer during their hospital stay.

## The learning

Direct contact with patients, family and professionals who take care for them, understanding about living conditions in hospitals, empathy, communication skills, recreational resources, responsibility and professional skills.



# The right to rights



## The service

Students and professors of Law give legal services to individuals and disadvantaged groups, collaborating with public, social and professional organizations.



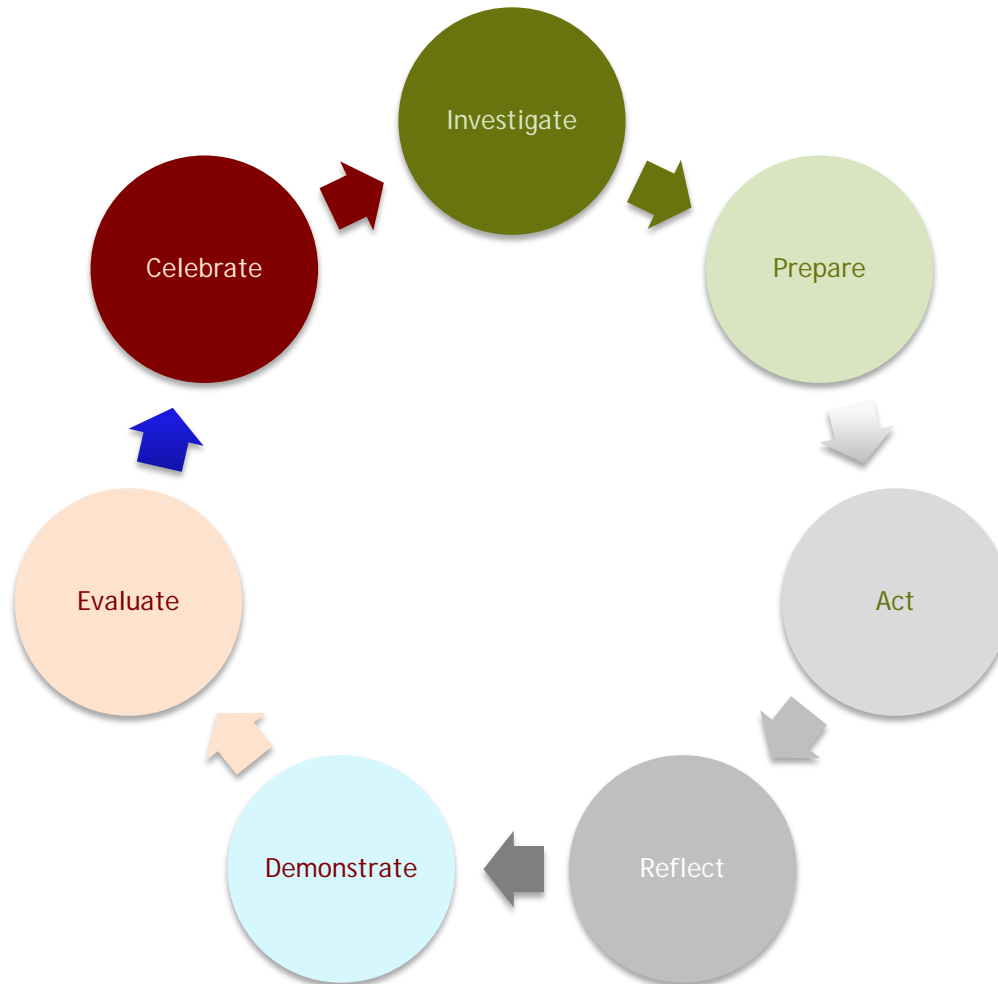
## The learning

Knowledge of various subjects: penitentiary law, international, social law, children, gender, immigration, human rights and communication skills through the media.

# Theoretical & practical foundations

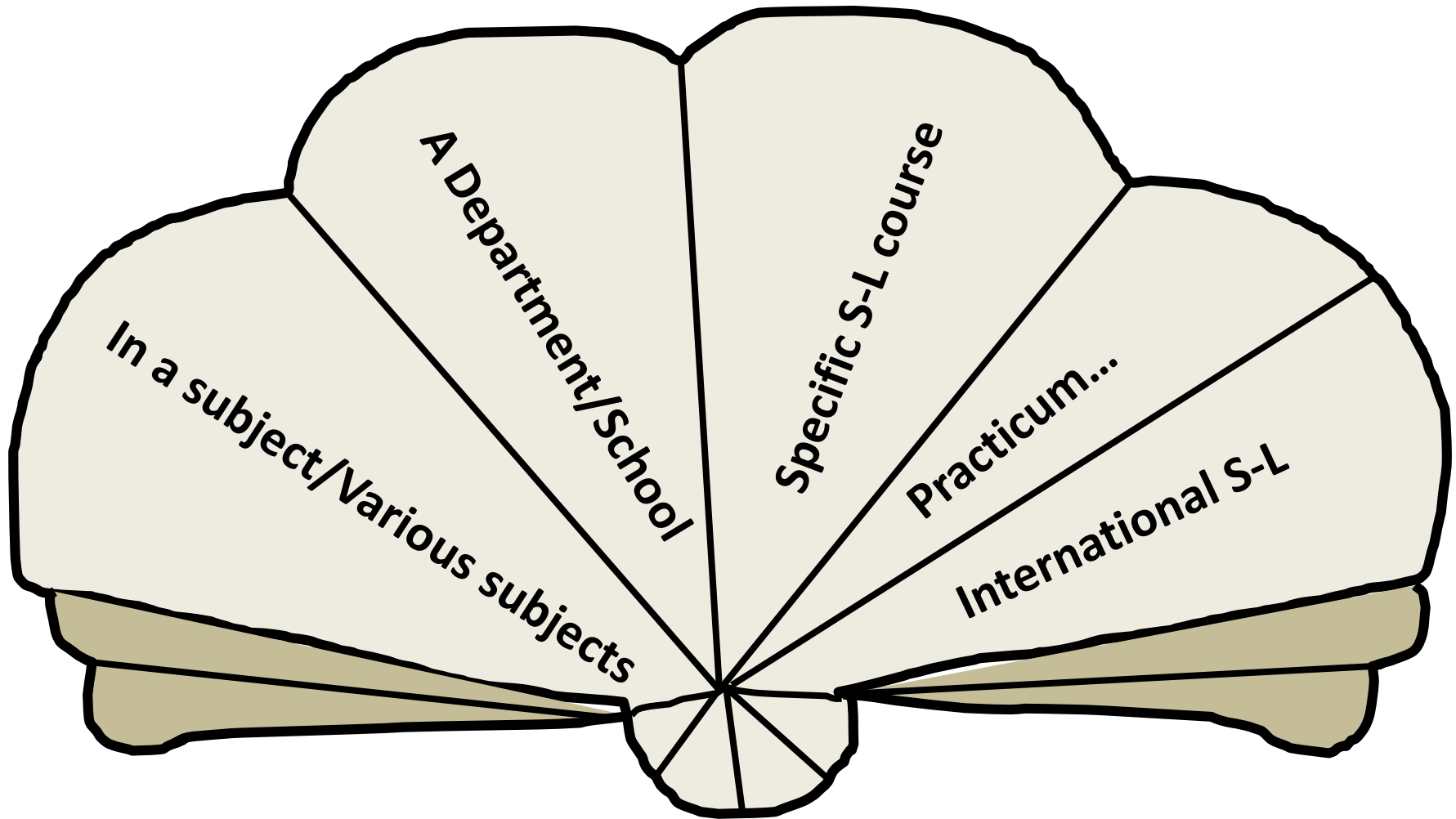


# Actions to be developed in a project ApS





# Where is S-L located...?



# Impact in the students

**International research on S-L has revealed positive impact in 6 developmental areas:**



**Andrew Furco**  
University of California-Berkeley, 2013

# The pedagogy of Service-Learning



# What is learning?

Acquiring and reproducing knowledge?

Constructing meaning and transferring knowledge?

Bouguerau  
*La lección difícil*



# Develops transversal competencies (ESHE)

## Instrumental

Capacity of analysis and synthesis  
Capacity of organization and planification  
Capacidad de gestión de la información  
Oral and written communication in a foreign language  
Knowledge of ICT  
Problem solving  
Making decisions

## Systemic

Autonomous Adaptation to new situations  
Creativity  
Leadership  
Initiative and entrepreneurship  
Motivation for quality  
Sensitiveness towards the environment

## Community service

## Personal

Team work  
Working in an international contexts  
Abilities for interpersonal relations  
Acknowledgement of diversity & multiculturality  
Critical reasoning

## Other

Critical and self-critical capacity  
Capacity for communicating with experts from other fields



We learn best when we put into **practice** what we are trying to learn



The learning pyramid of Cody Blair



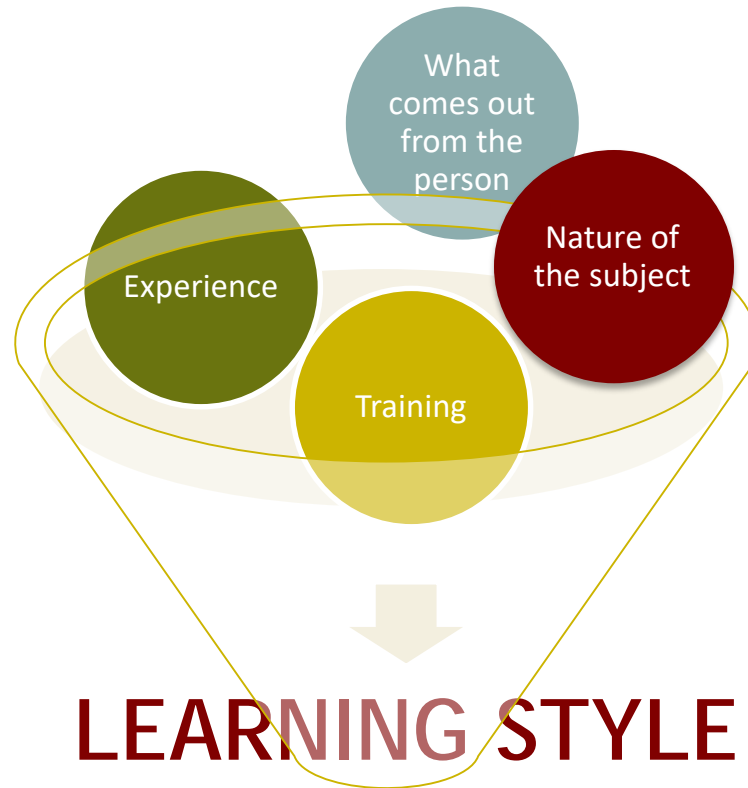
We learn even more when the practice is linked to a **social need...**



... because it generates a **commitment.**

(Nieves Tapia – CLAYSS)

# Respects differences in learning style



- ✓ Profound – Superficial – Strategic
- ✓ Serialist – Holistic
- ✓ Convergent – Divergent
- ✓ Assimilator - Accommodator
- ✓ Reflective - Impulsive



# Learning by doing improves memory



# Panorama of service-learning in the world



# Service-learning in the world



The Talloires  
Network







Developing a culture of civic engagement  
through service-learning  
within Higher Education in Europe

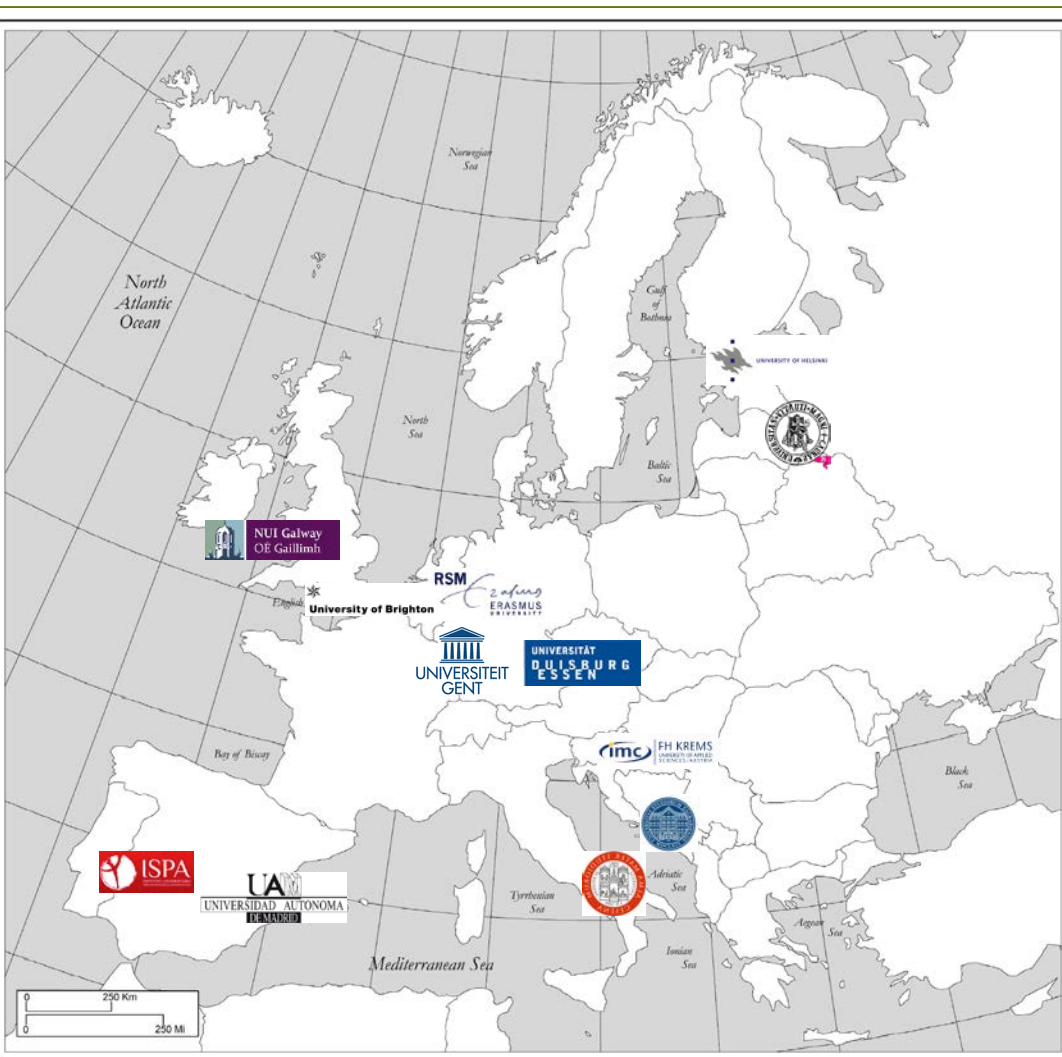


- Erasmus+ project
- Key Action 2: Strategic Partnerships-Higher Education
- 2014 - 2017





# Partners



1. Autonomous University of Madrid (Spain)
2. Erasmus University of Rotterdam (Netherland)
3. Ghent University (Belgium)
4. Instituto Superior de Psicologia Aplicada (Portugal )
5. National University of Ireland, Galway (Ireland)
6. University of Applied Science-Krems (Austria)
7. University of Bologna (Italy)
8. University of Brighton (United Kingdom)
9. University of Duisburg-Essen (Germany)
10. University of Helsinki (Finland)
11. University of Zagreb (Croatia)
12. Vyttautas Magnus University (Lithuania)

# Aim of the project



To promote **service-learning** as a pedagogical approach that embeds and develops civic engagement within higher education in Europe...

# Specific objectives

- Mapping S-L within Europe
  - Knowledge sharing
    - Intervention
      - Training
- Promoting institutionalization
  - Disseminating







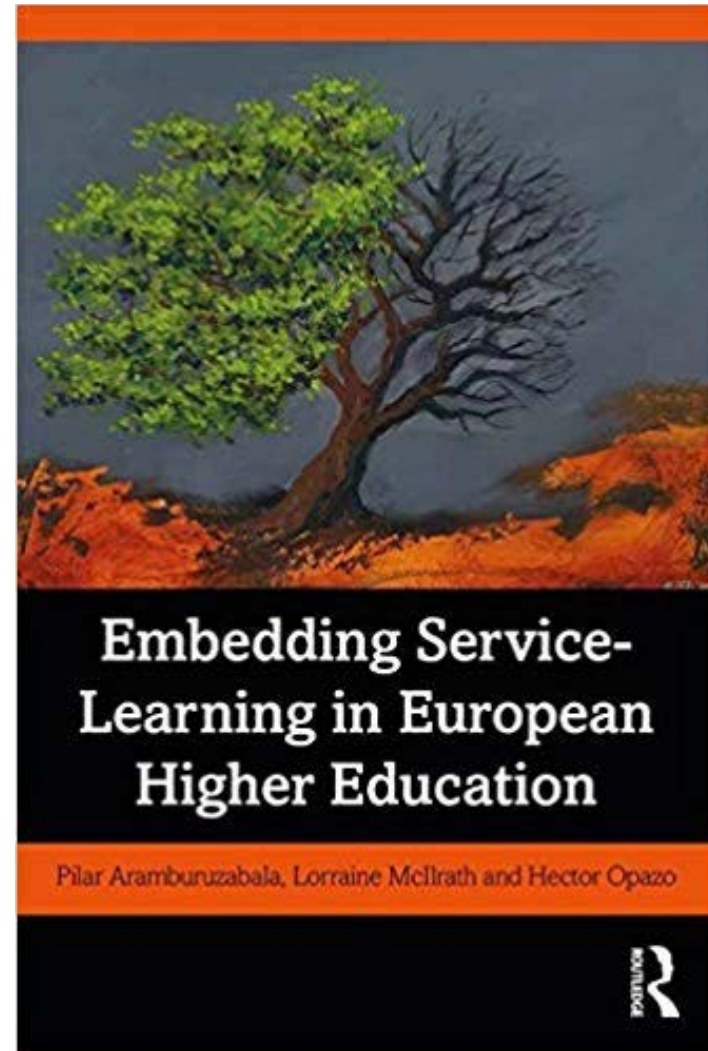
... and the creation of national networks and a European network

# Collective definition of S-L

*Service-learning (sometimes referred to as community based or community engaged learning) is an innovative pedagogical approach that integrates meaningful community service or engagement into the curriculum and offers students **academic credit** for the learning that derives from active engagement within community and work on a real world problem.*

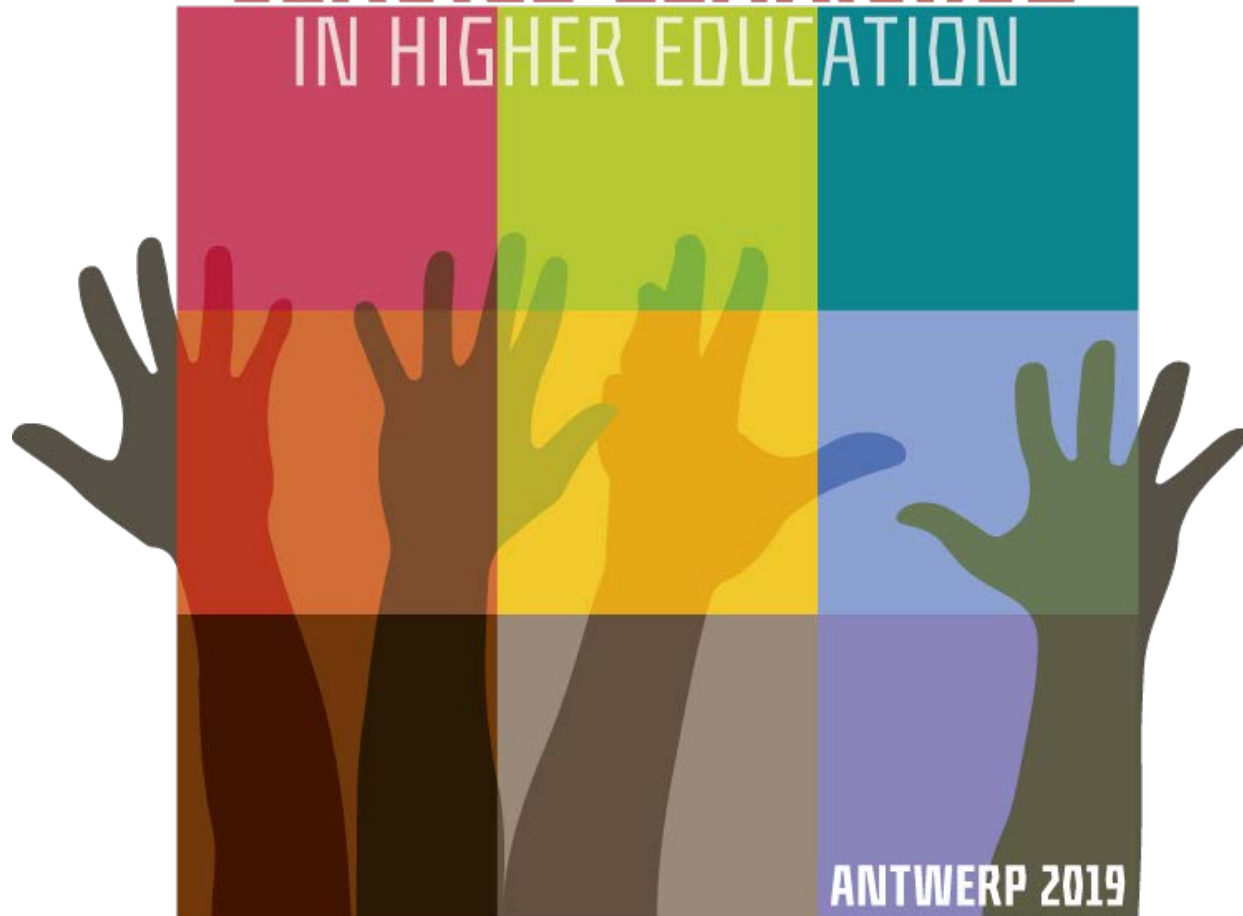
***Reflection** and experiential learning strategies underpin the process and the service is linked to the academic discipline. (Europe Engage, 2015)*

- 2019
- Routledge. Taylor & Francis Group
- 31 authors (incl. 4 guest & 11 students)
- 4 parts and 14 chapters





SECOND EUROPEAN CONFERENCE ON  
**SERVICE-LEARNING**  
IN HIGHER EDUCATION



learn to engage · engage to learn

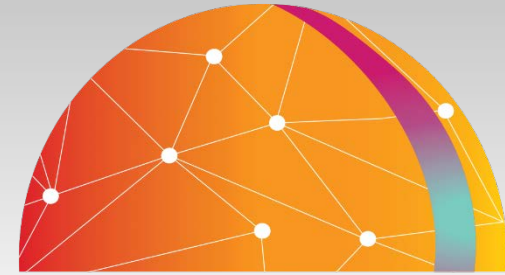
19-21 September 2019

# European Association of Service-Learning in Higher Education (EASLHE)



**EASLHE General Meeting**  
21st September 2019

It aims to promote service-learning in higher education in Europe and to foster scholarly activities related to it.



European Observatory  
of Service-Learning  
in Higher Education

[www.eoslhe.eu](http://www.eoslhe.eu)



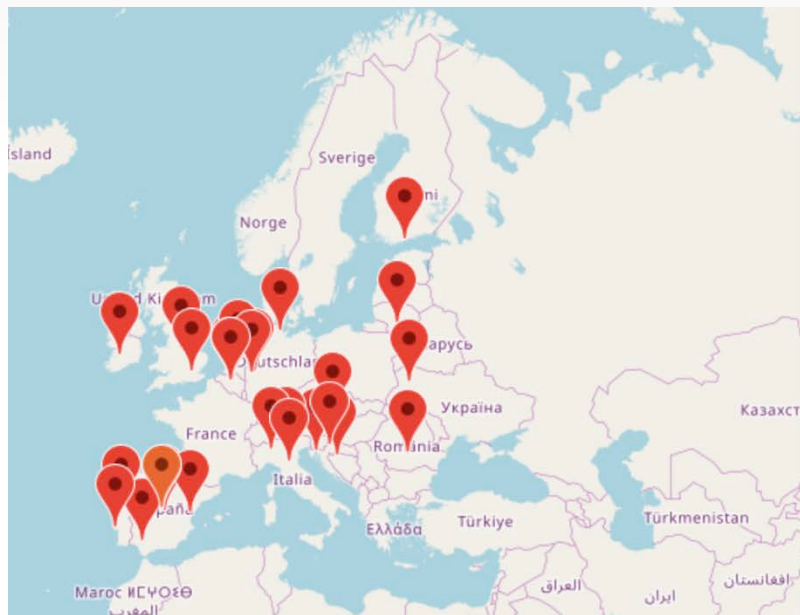


European Observatory  
of Service-Learning  
in Higher Education

# KEY ACTIVITIES



## Collecting data



PLACE YOUR S-L EXPERIENCE ON THE  
MAP!

**Challenge:**

**At least 50 EXPERIENCES SHARED in 25  
different COUNTRIES by 31st December  
2019**

Experiences collected so far....

 **33** Experiences

Service-Learning Experiences Shared



[www.eoslhe.eu](http://www.eoslhe.eu)

# The challenge of institutionalization

- Policy
- Time
- Knowledge and Expertise
- Funding
- National and Institutional Prioritisation - employability
- Units
- Reward and Recognition





**What is the final aim of  
Education?**





The final aim of Education is none other than the well being of humanity

Dr. Pilar Aramburuzabala  
European Association of Service-Learning in Higher Education  
President

[pilar.aramburuzabala@uam.es](mailto:pilar.aramburuzabala@uam.es)

[www.eoslhe.eu](http://www.eoslhe.eu)  
[europeengage.org](http://europeengage.org)  
[www.apsuniversitario.org](http://www.apsuniversitario.org)